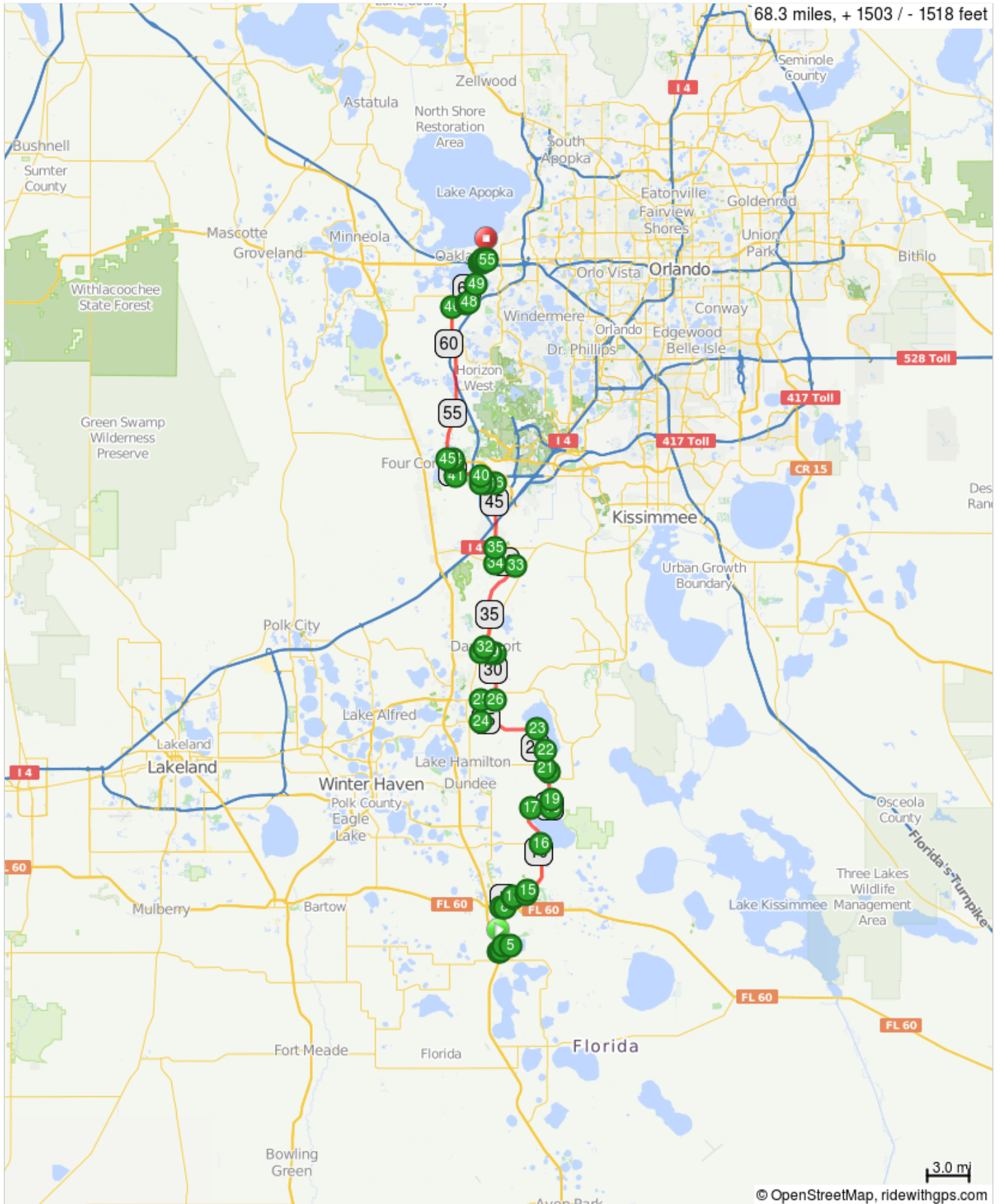


# Day3-StA



## St. Augustine Day 2 - Lake Wakes to Winter Garden



## Day3-StA

0.0	0.0	🚩	0.0	Start of route
0.0	0.0	↑	0.2	Continue onto Harbor Dr
0.2	0.2	←	0.5	L onto Harbor Beach Dr/Perry Rd
0.7	0.5	→	0.5	R onto Perry Rd
1.2	0.5	←	3.0	L onto FL-17 N

1.2 miles. +68/-28 feet



Lake Wales

Penry Road

Harbor Beach Drive

Harbor Drive

Harbor Beach Drive

Arti Lane

South Scenic Highway

Lake Easy Terrace

Darling Loop Road

4.2	3.0	→	0.2	Sharp R onto E Polk Ave
4.4	0.2	←	0.0	L onto S Lakeshore Blvd
4.4	0.0	→	1.2	R onto Polk Ave
5.6	1.2	↑	0.0	Make a U-turn
5.6	0.0	→	0.0	R toward 3rd/N Lakeshore Blvd
5.6	0.0	←	0.0	L onto 3rd/N Lakeshore Blvd
5.6	0.0	→	0.1	R onto 9th St
5.7	0.1	→	0.9	R

4.5 miles. +29/-36 feet



6.6	0.9	←	0.3	L onto Buck Moore Rd
6.9	0.3	→	3.8	R onto FL-17 Alt

1.2 miles. +11/-4 feet



10.7	3.8	→	2.9	R onto Timberlane Rd
13.6	2.9	→	1.5	R onto Canal Rd

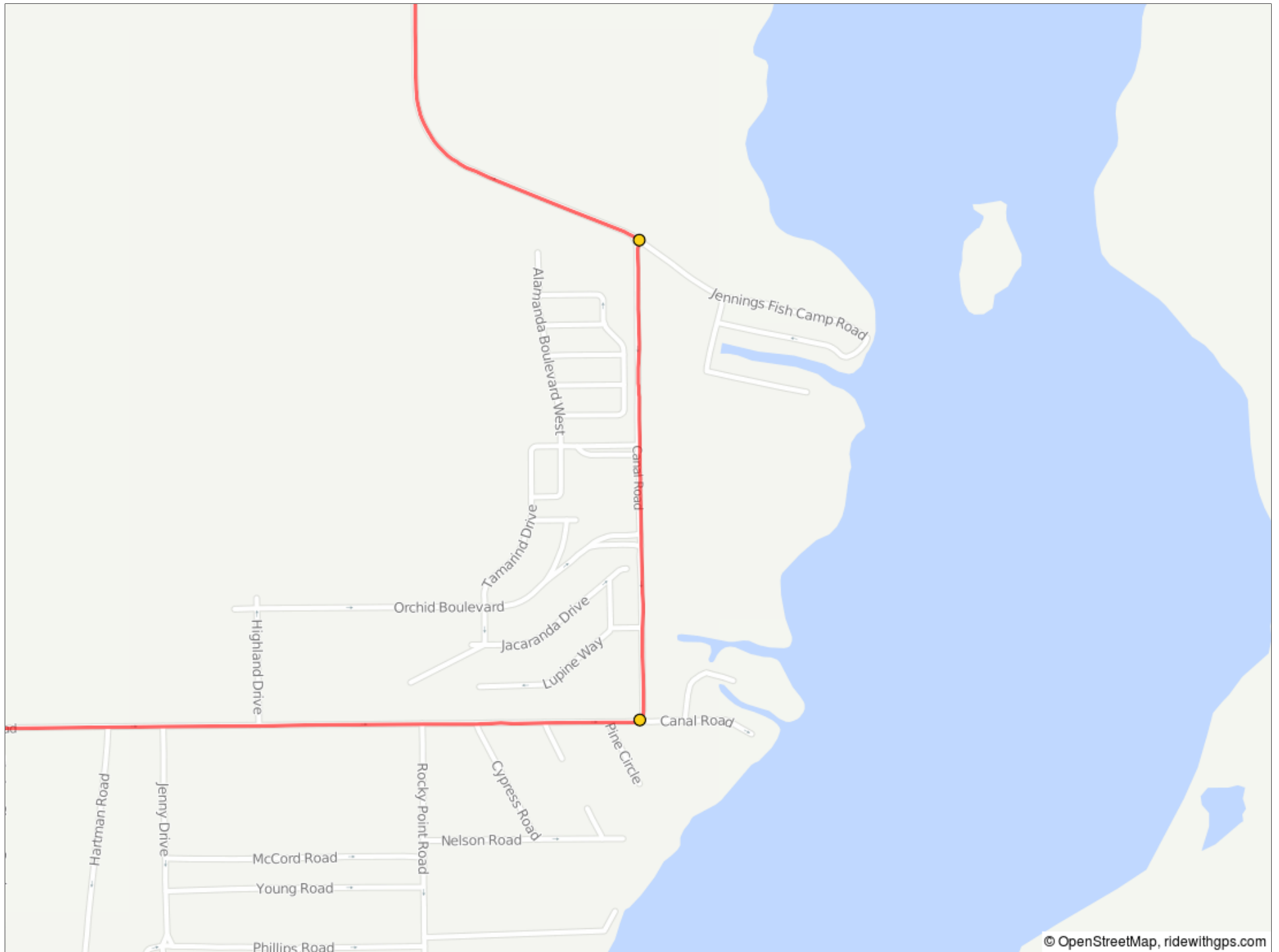
6.7 miles. +14/-24 feet





15.1	1.5	←	0.5	L to stay on Canal Rd
15.6	0.5	←	2.1	L onto Watkins Rd

2.0 miles. +24/-18 feet



17.8	2.1	←	0.4	L onto Hatchineha Rd
18.1	0.4	→	1.2	R onto Jim Edwards Rd

2.5 miles. +6/-9 feet



19.4	1.2	←	2.0	L onto W Lake Marion Rd
21.4	2.0	↑	4.1	Continue onto Marion Rd

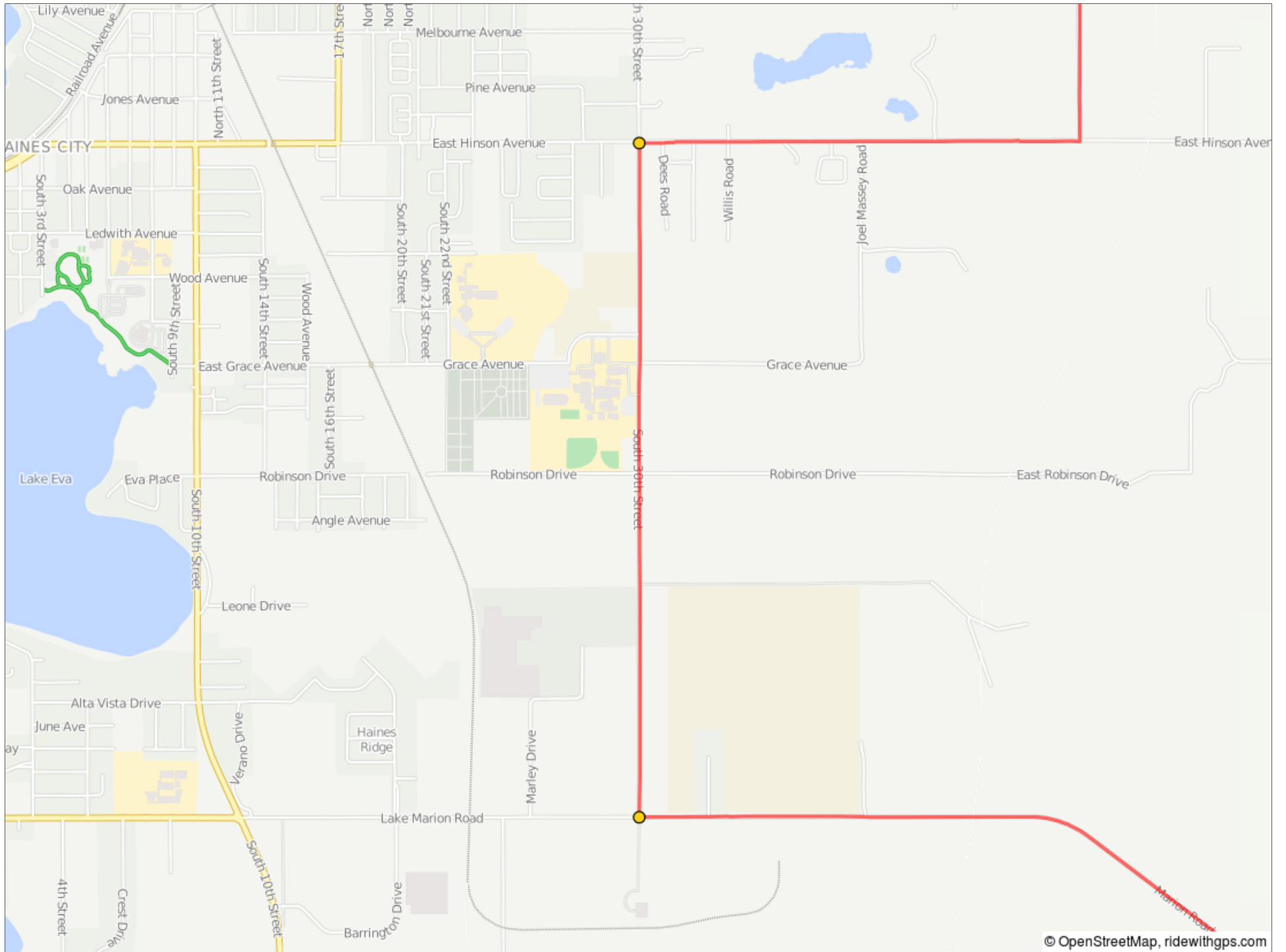
3.3 miles. +35/-36 feet



25.5	4.1	→	1.5	R onto S 30th St
27.0	1.5	→	1.0	R onto E Hinson Ave

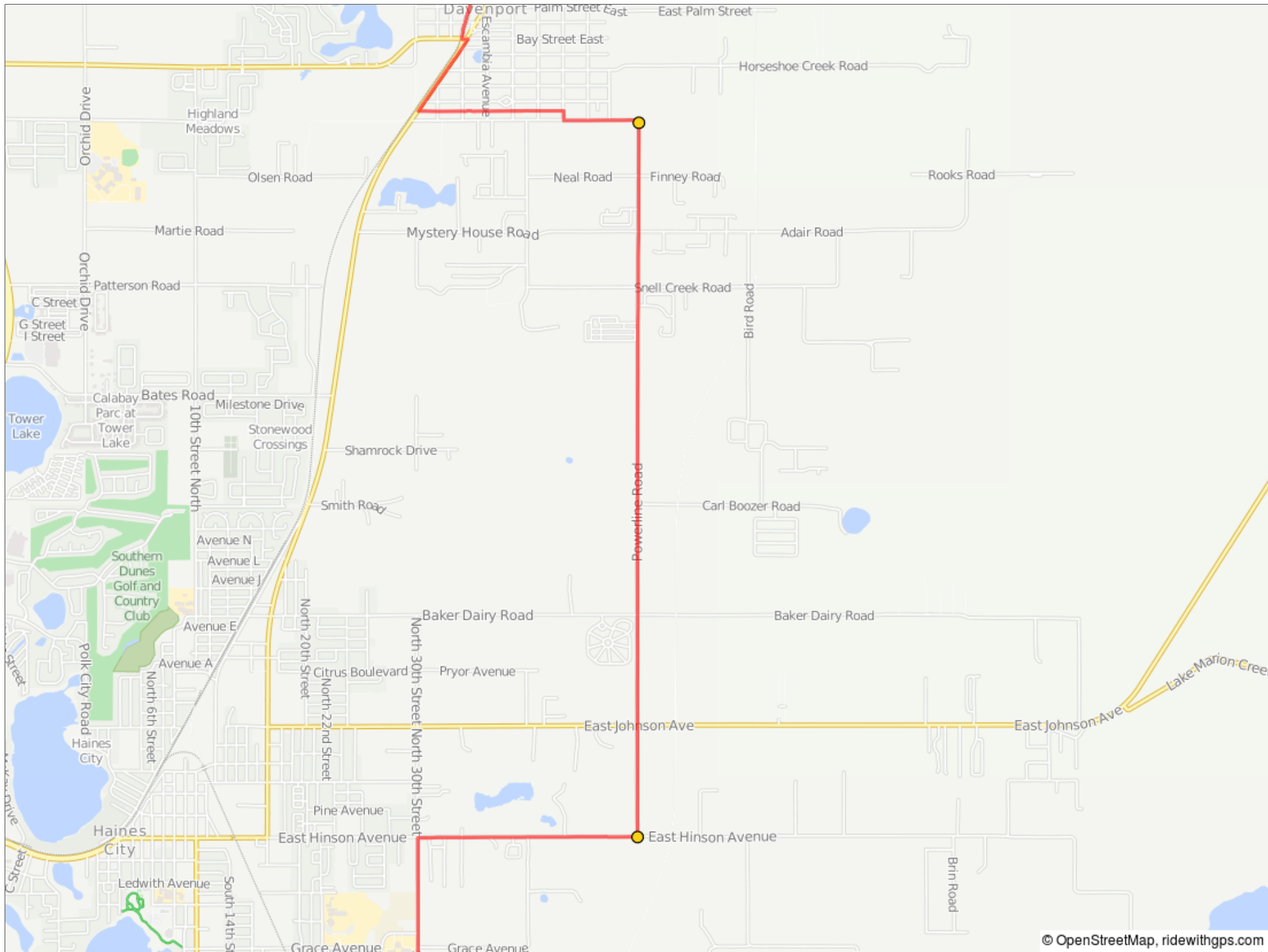
5.6 miles. +24/-67 feet





28.0	1.0	←	3.3	L onto Power Line Rd
31.3	3.3	←	0.3	Slight L onto South Blvd E

4.3 miles. +81/-73 feet



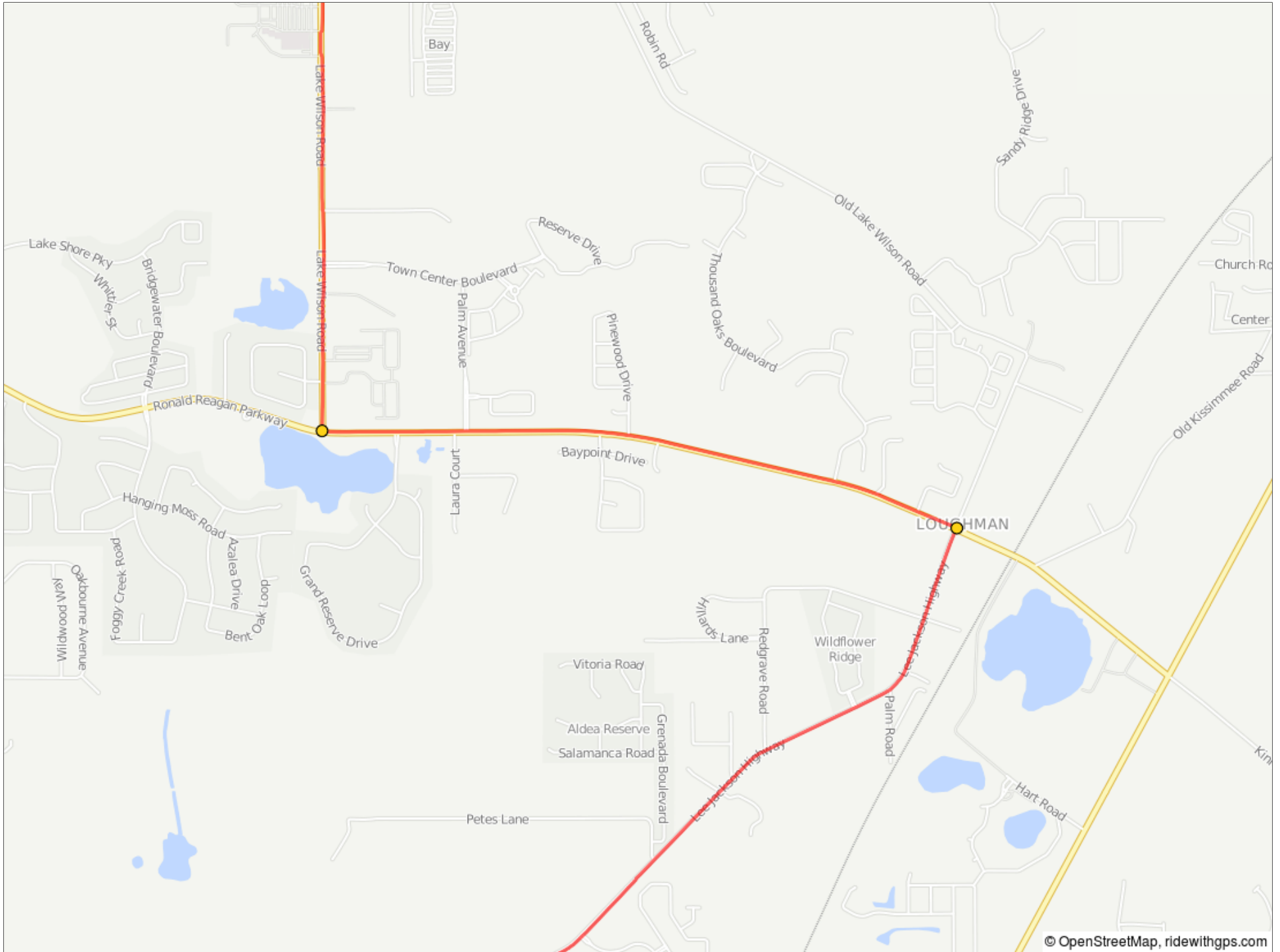
31.6	0.3	→	0.0	R onto Kissimmee Ave
31.6	0.0	←	0.7	L
32.3	0.7	→	0.4	R onto US-17 N/US-92 E
32.7	0.4	←	0.0	L onto W Bay St/Davenport Blvd
32.7	0.0	→	6.6	R onto County Rd 547

1.5 miles. +30/-30 feet



39.3	6.6	←	1.5	L onto Polk 54/Ronald Reagan Pkwy
40.8	1.5	→	1.0	R onto Lake Wilson Rd

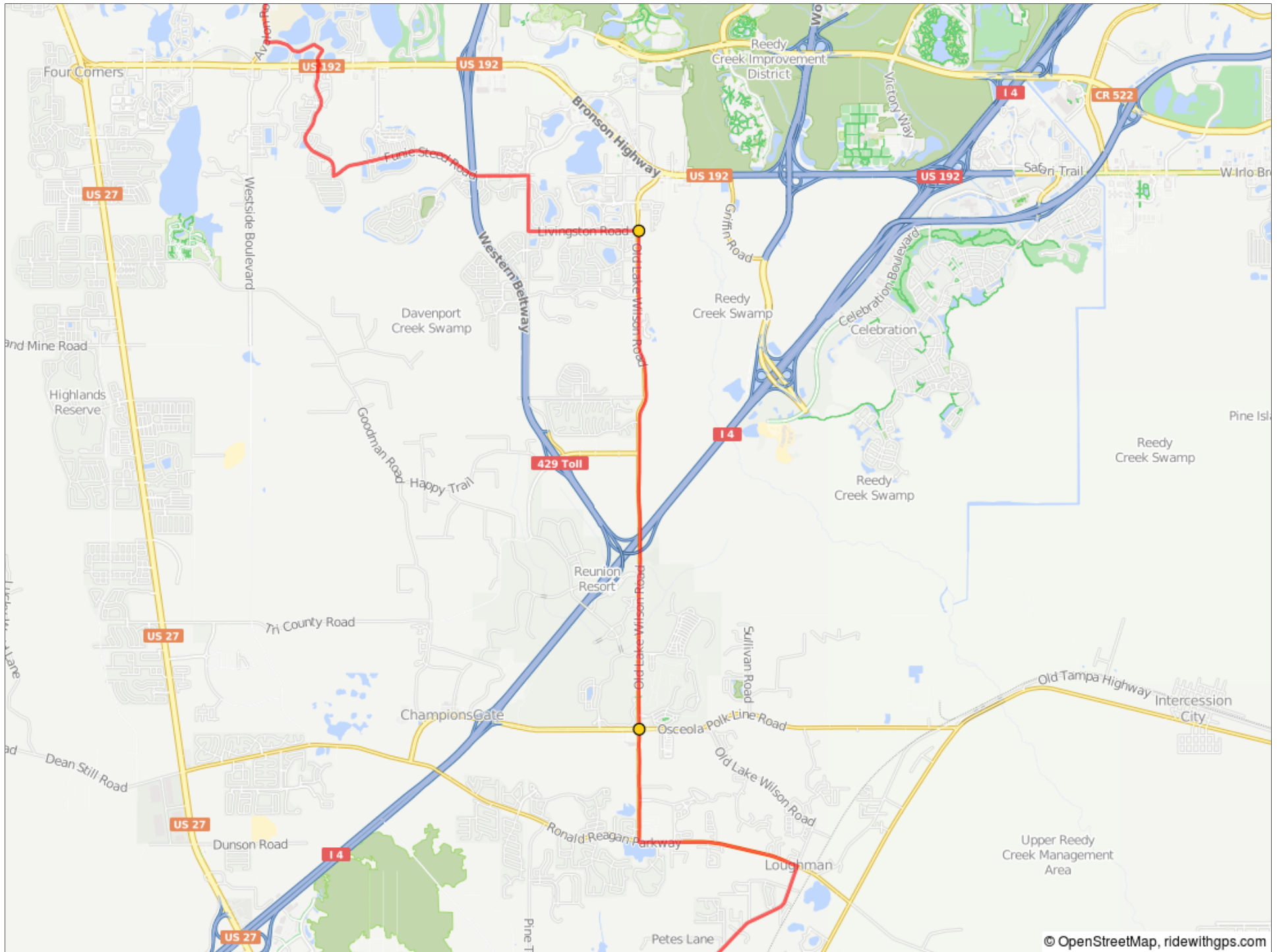
8.1 miles. +33/-24 feet



41.8	1.0	↑	4.6	Continue onto S Old Lake Wilson Rd
46.4	4.6	←	0.6	L onto Livingston Rd

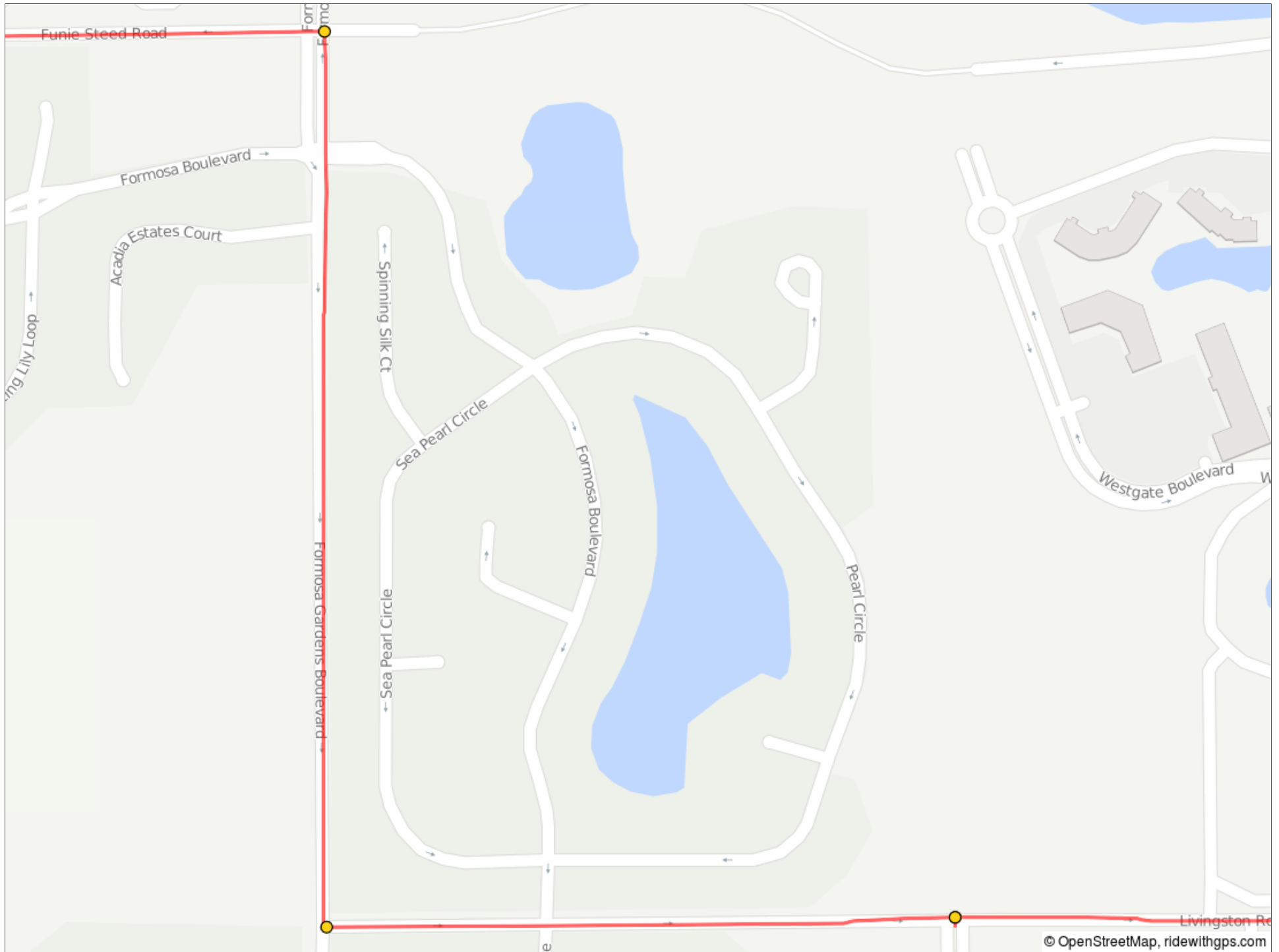
5.6 miles. +162/-196 feet





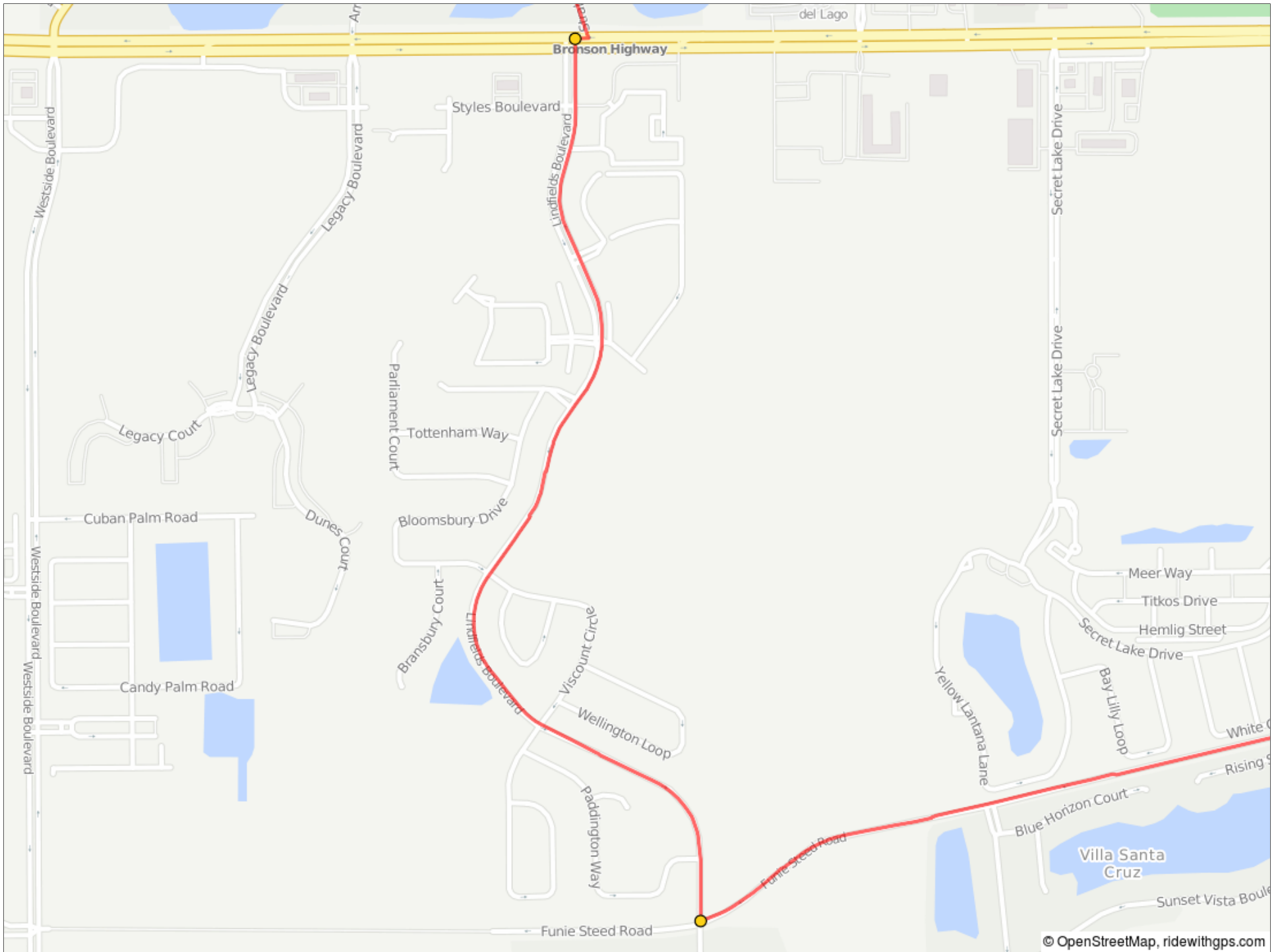
47.0	0.6	←	0.0	L onto Archfeld Blvd
47.0	0.0	←	0.4	L onto Livingston Rd
47.4	0.4	→	0.5	R onto Formosa Gardens Blvd
47.9	0.5	←	1.9	L onto Funie Steed Rd

1.5 miles. +11/-11 feet



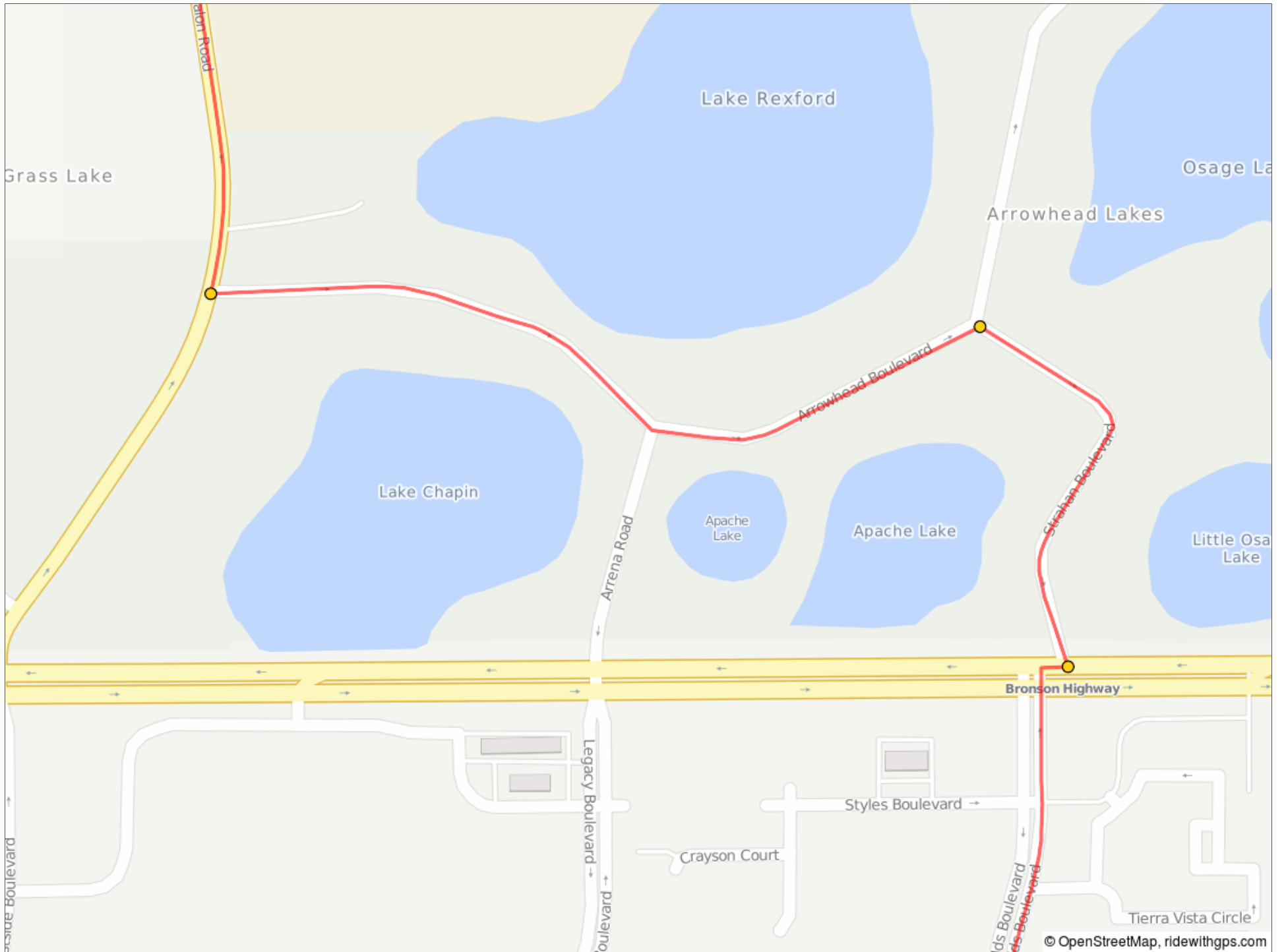
49.8	1.9	→	1.2	R onto Lindfields Blvd
51.0	1.2	→	0.0	R onto US-192 W

3.1 miles. +32/-27 feet



51.0	0.0	←	0.2	L onto Strahan Blvd
51.2	0.2	←	0.5	L onto Arrowhead Blvd
51.7	0.5	→	11.0	R onto Avalon Rd

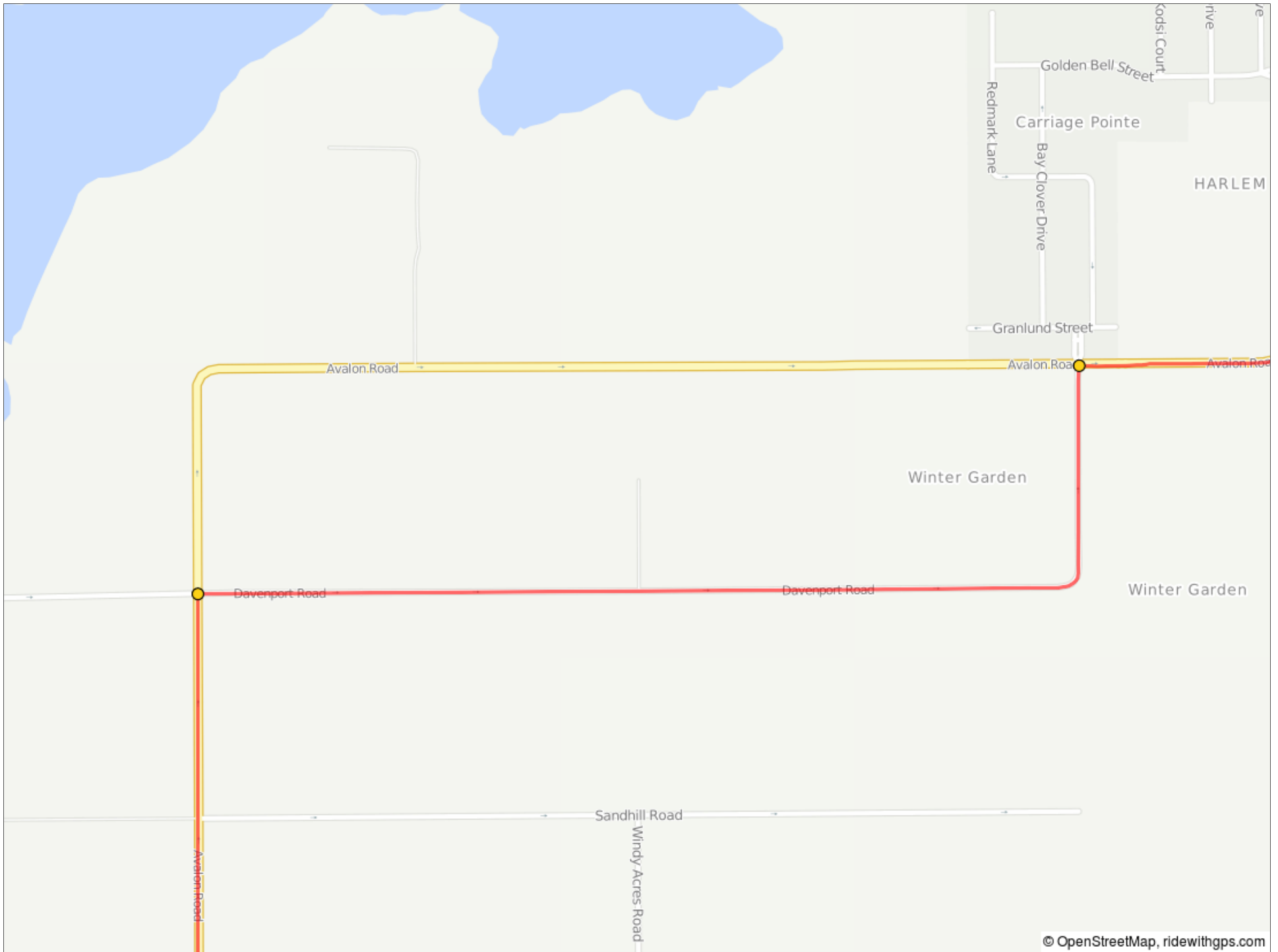
0.7 miles. +0/-6 feet



62.7	11.0	→	1.2	R onto Davenport Rd
63.9	1.2	→	0.2	R onto Avalon Rd

12.2 miles. +10/-24 feet





64.1	0.2	←	1.7	Slight L to stay on Avalon Rd
65.9	1.7	←	1.6	L to stay on Avalon Rd

2.0 miles. +18/-45 feet



67.5	1.6	→	0.1	R
67.7	0.1	←	0.2	L onto W Pointe Villas Blvd
67.8	0.2	←	0.1	L to stay on W Pointe Villas Blvd
68.0	0.1	→	0.3	R onto W Colonial Dr
68.2	0.3	→	0.1	R
68.3	0.1	🚩	0.0	End of route

2.4 miles. +17/-14 feet

