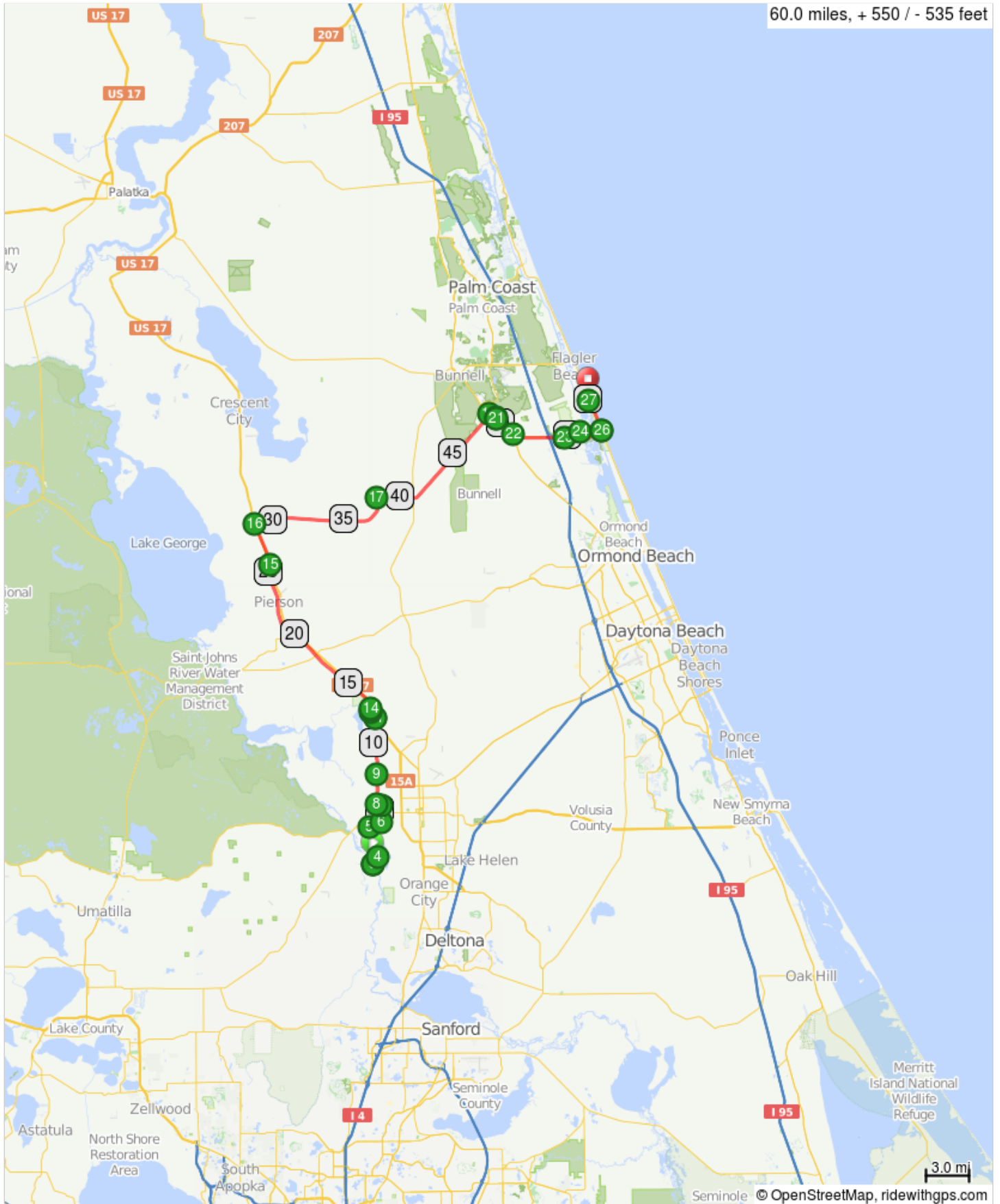


Day5-StA



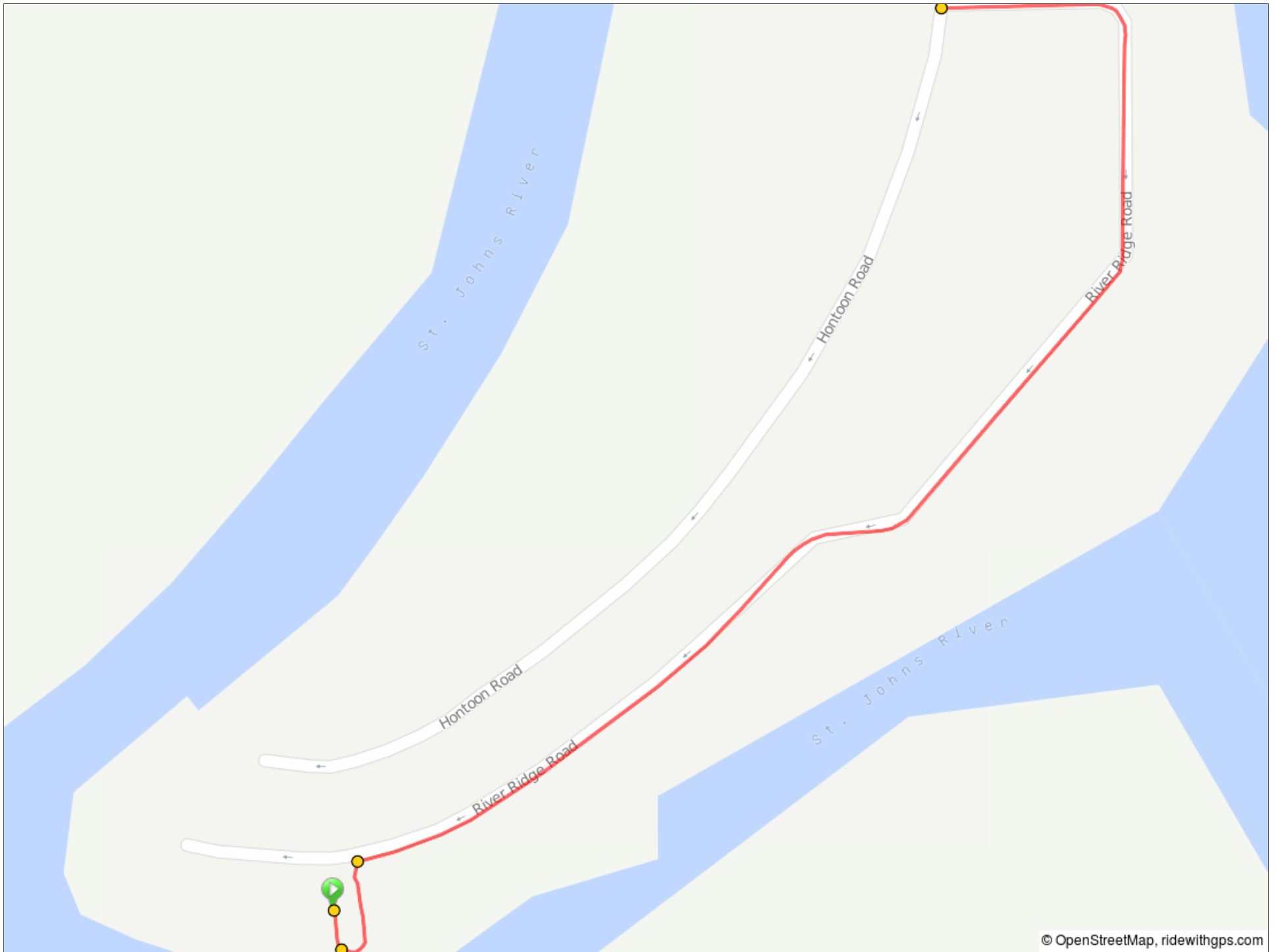
St. Augustine Day 5 - Hoonton Island SP to Flagler Beach



Day5-StA

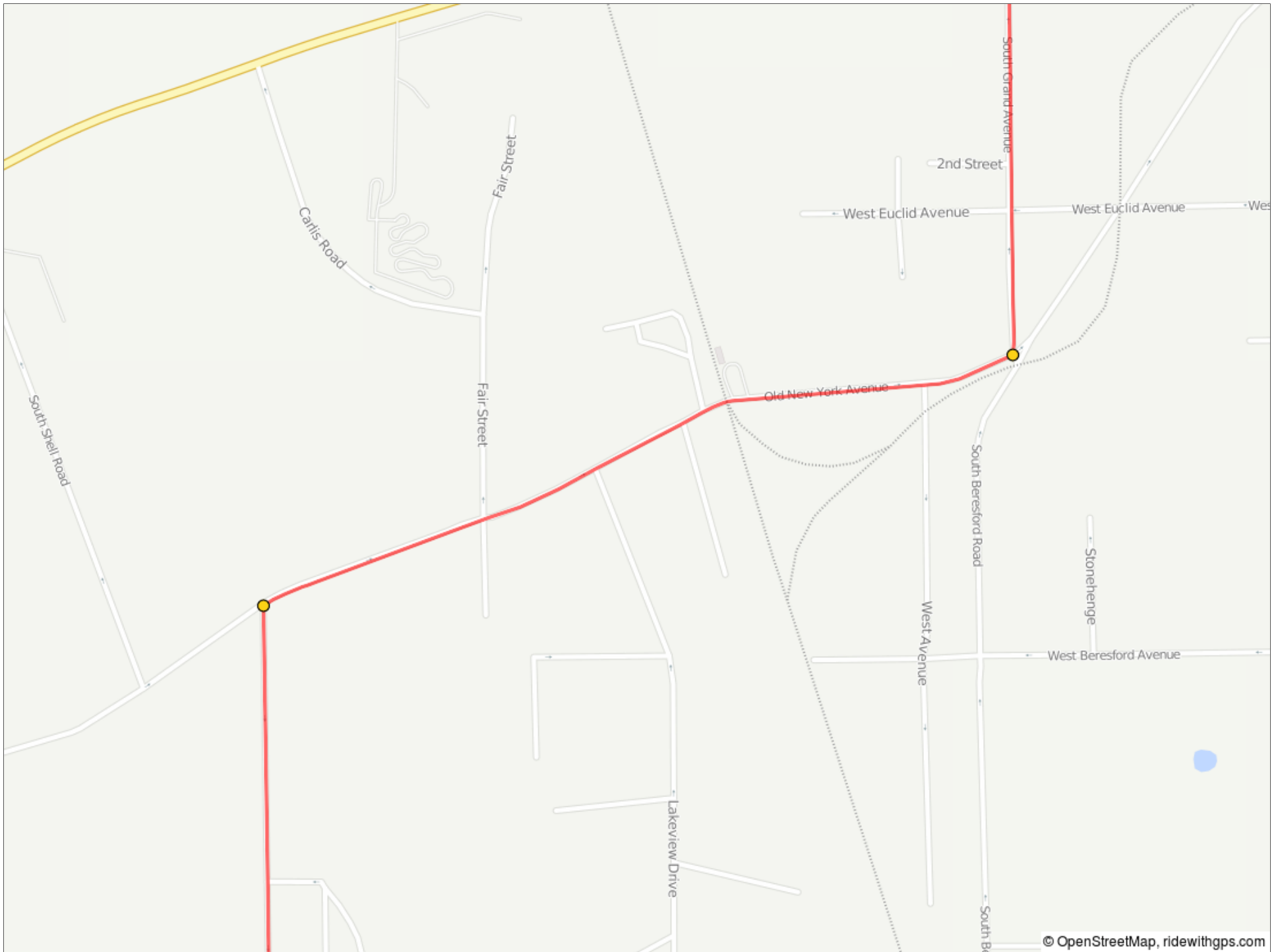
0.0	0.0	🚩	0.0	Start of route
0.0	0.0	←	0.1	L toward River Ridge Rd
0.1	0.1	→	0.8	R onto River Ridge Rd
0.9	0.8	→	2.4	R onto Hontoon Rd

0.9 miles. +1/-2 feet



3.3	2.4	→	0.9	R onto Old New York Ave
4.2	0.9	←	1.2	L onto S Grand Ave

3.3 miles. +30/-0 feet



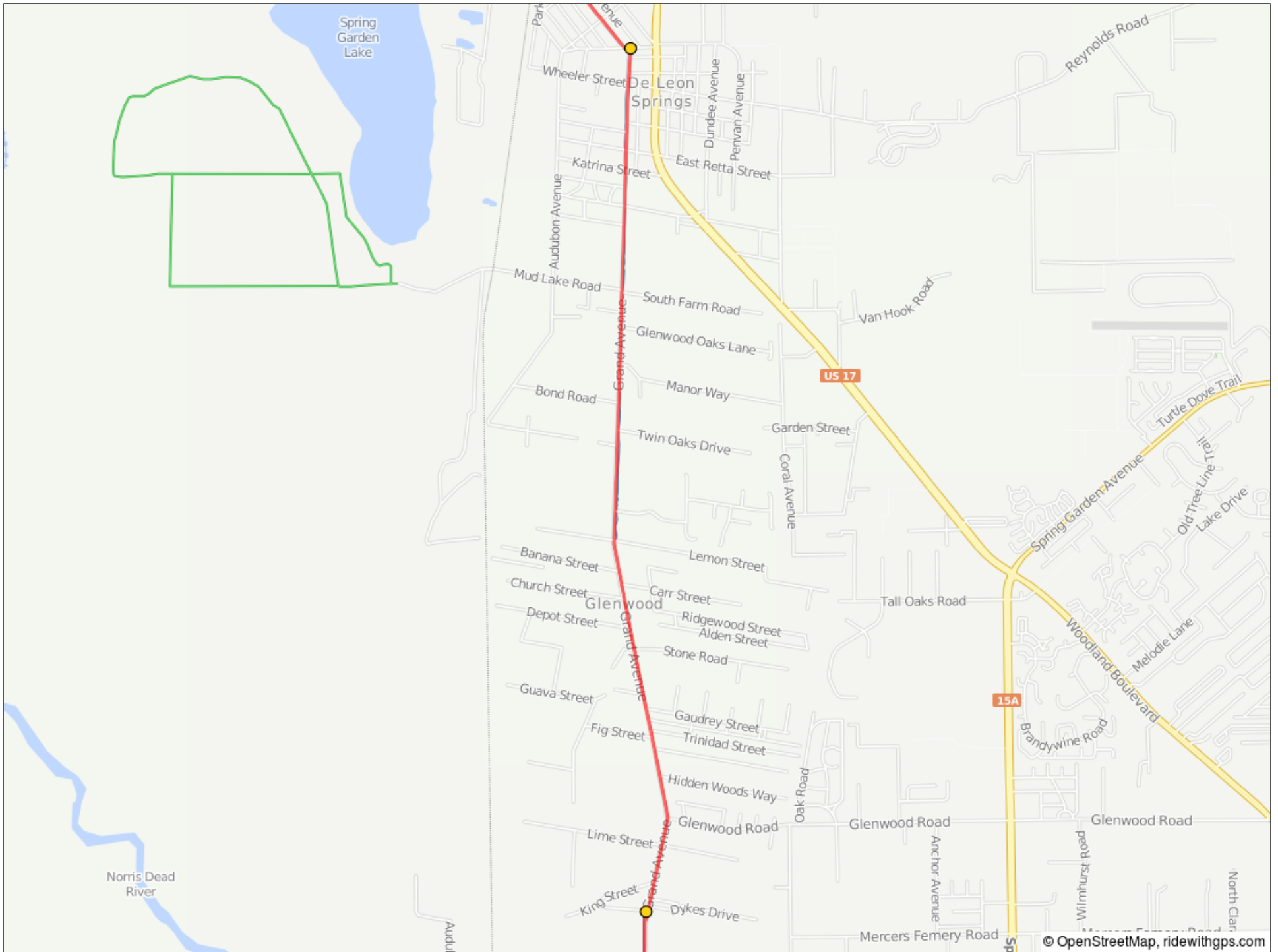
5.4	1.2	←	0.3	L onto Grand Ave
5.7	0.3	←	2.1	Slight L

1.5 miles. +13/-12 feet



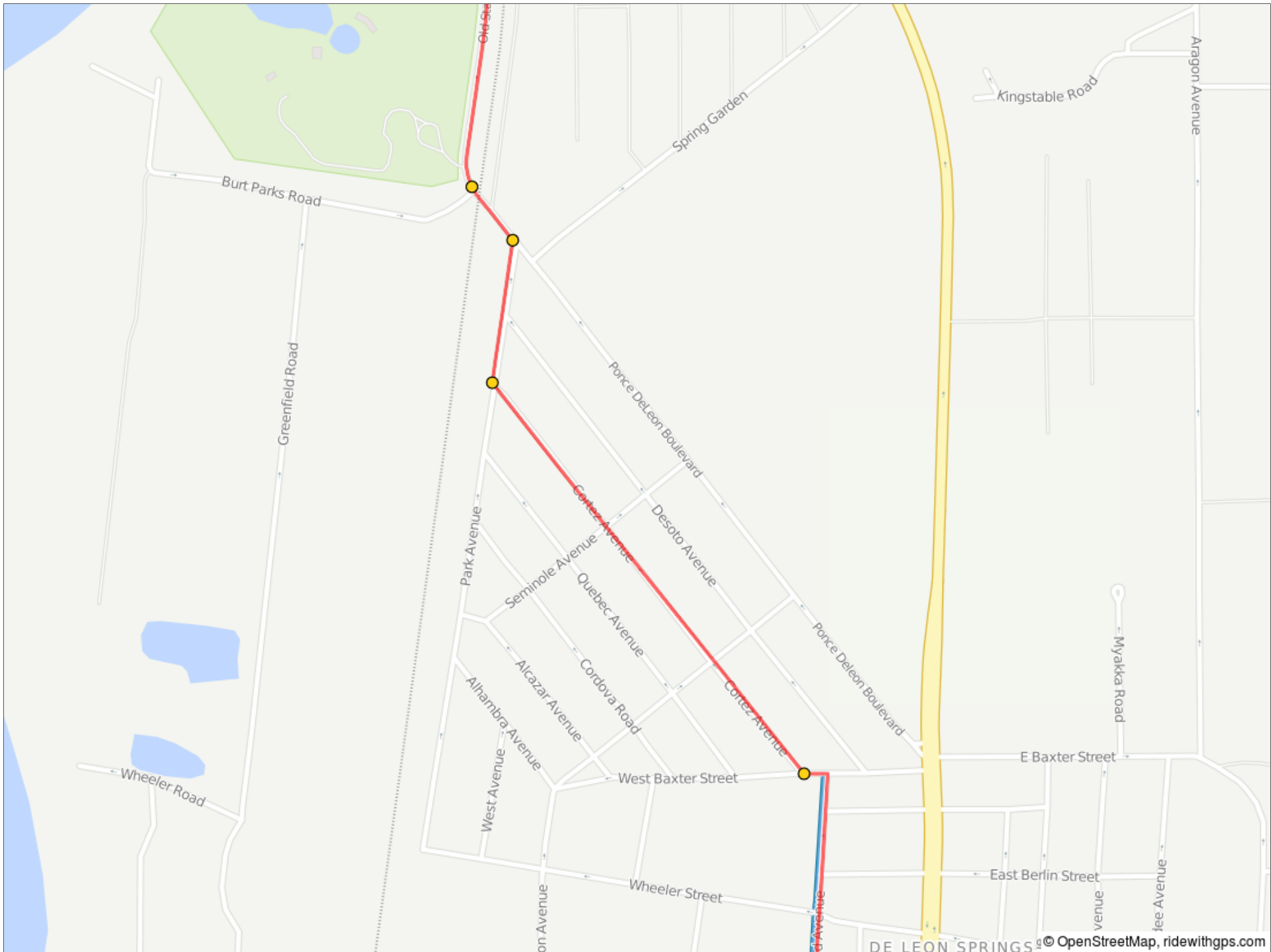
7.8	2.1	→	4.0	Sharp R onto Grand Ave
11.8	4.0	←	0.0	L onto W Baxter St

6.1 miles. +83/-104 feet



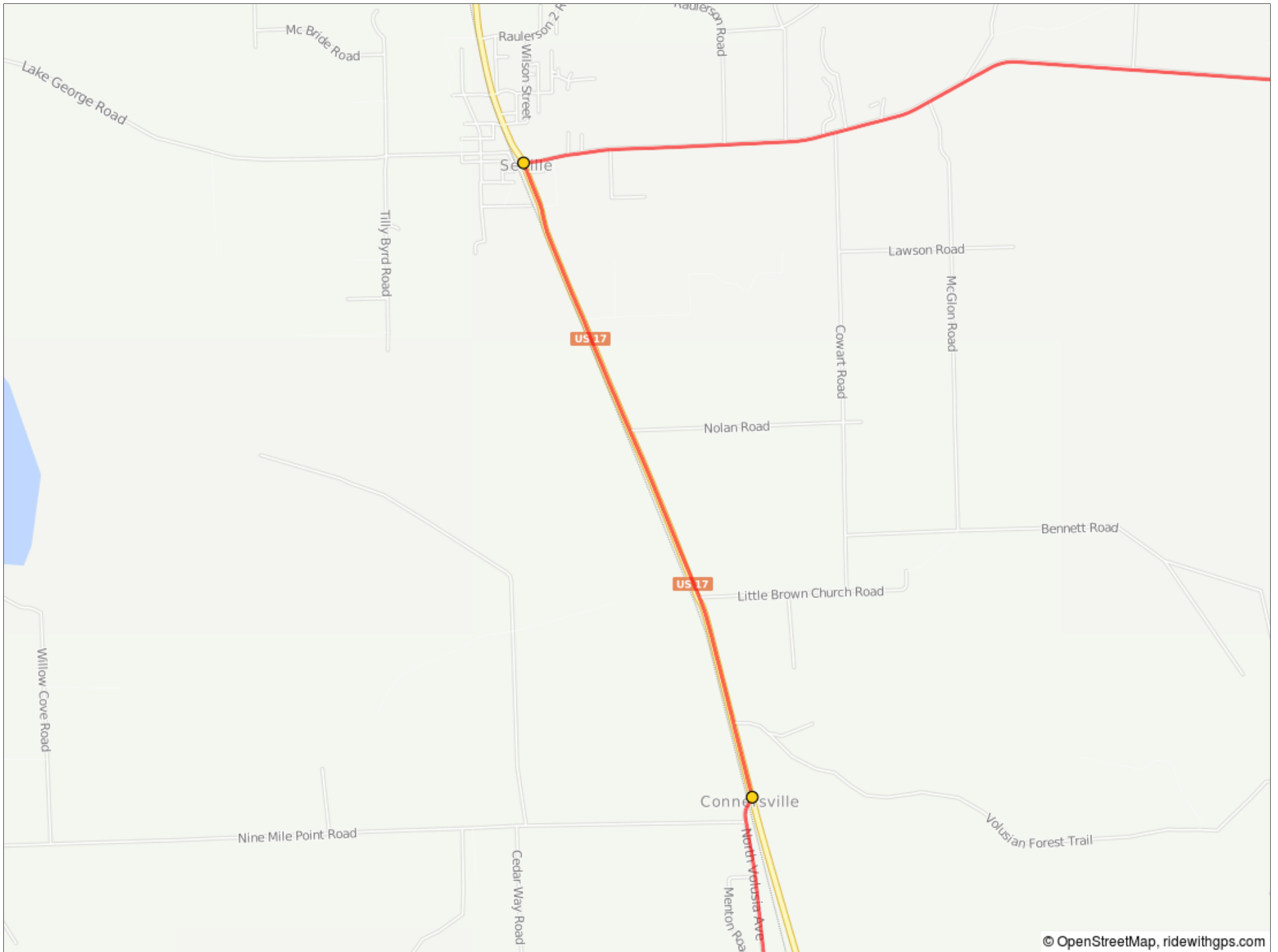
11.9	0.0	→	0.6	R onto Cortez Ave
12.4	0.6	→	0.2	R onto Park Ave
12.6	0.2	←	0.1	L onto Ponce Deleon Blvd
12.7	0.1	→	12.9	Slight R onto S Co Rd 3

0.8 miles. +5/-30 feet



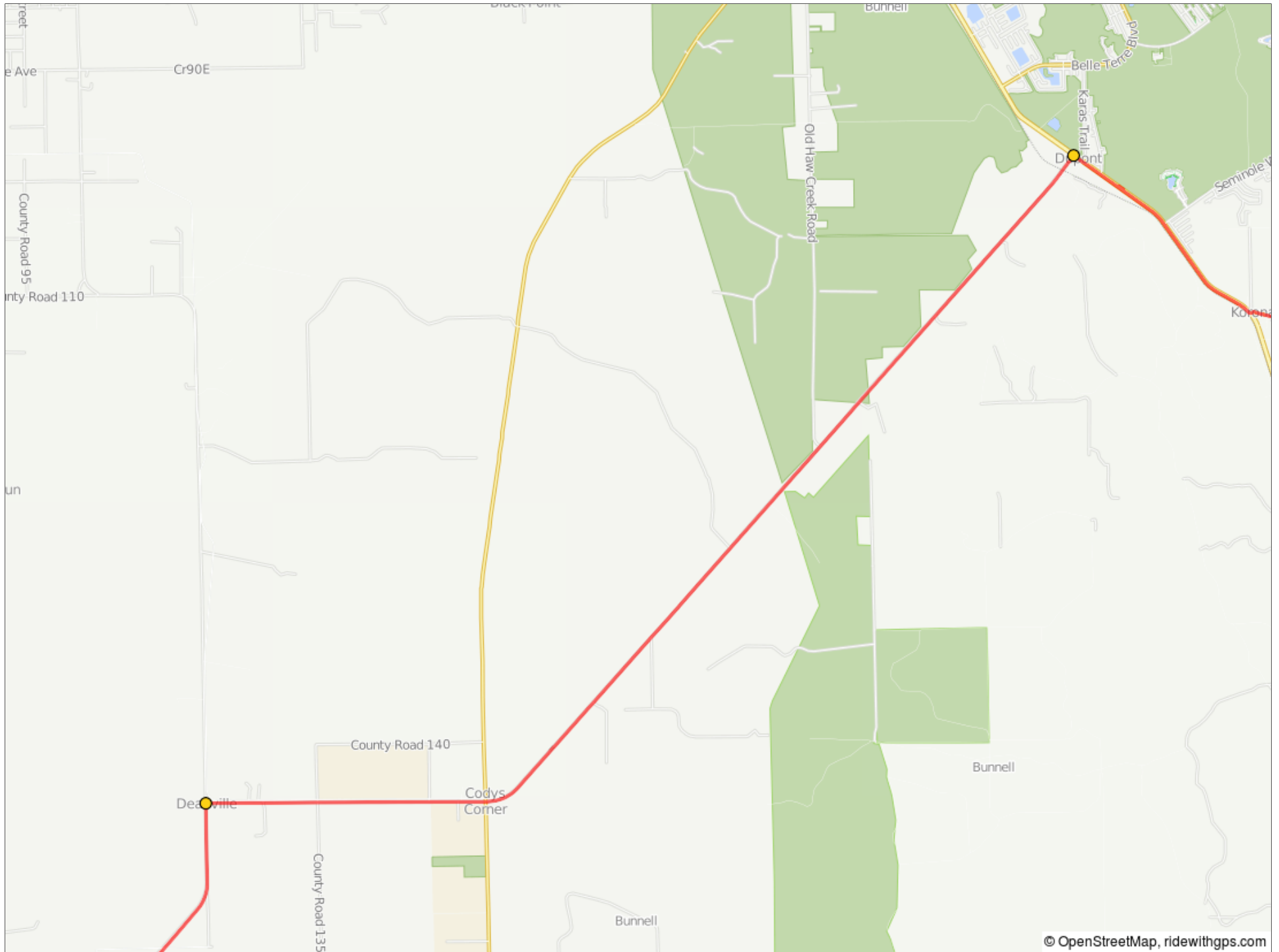
25.6	12.9	←	3.0	Slight L onto US-17 N
28.6	3.0	→	9.7	R onto Co Rd 305/Bunnell Rd

16.0 miles. +56/-41 feet



38.3	9.7	→	10.4	R onto Co Rd 304
48.7	10.4	→	0.5	R onto U.S. 1 S

20.1 miles. +26/-16 feet



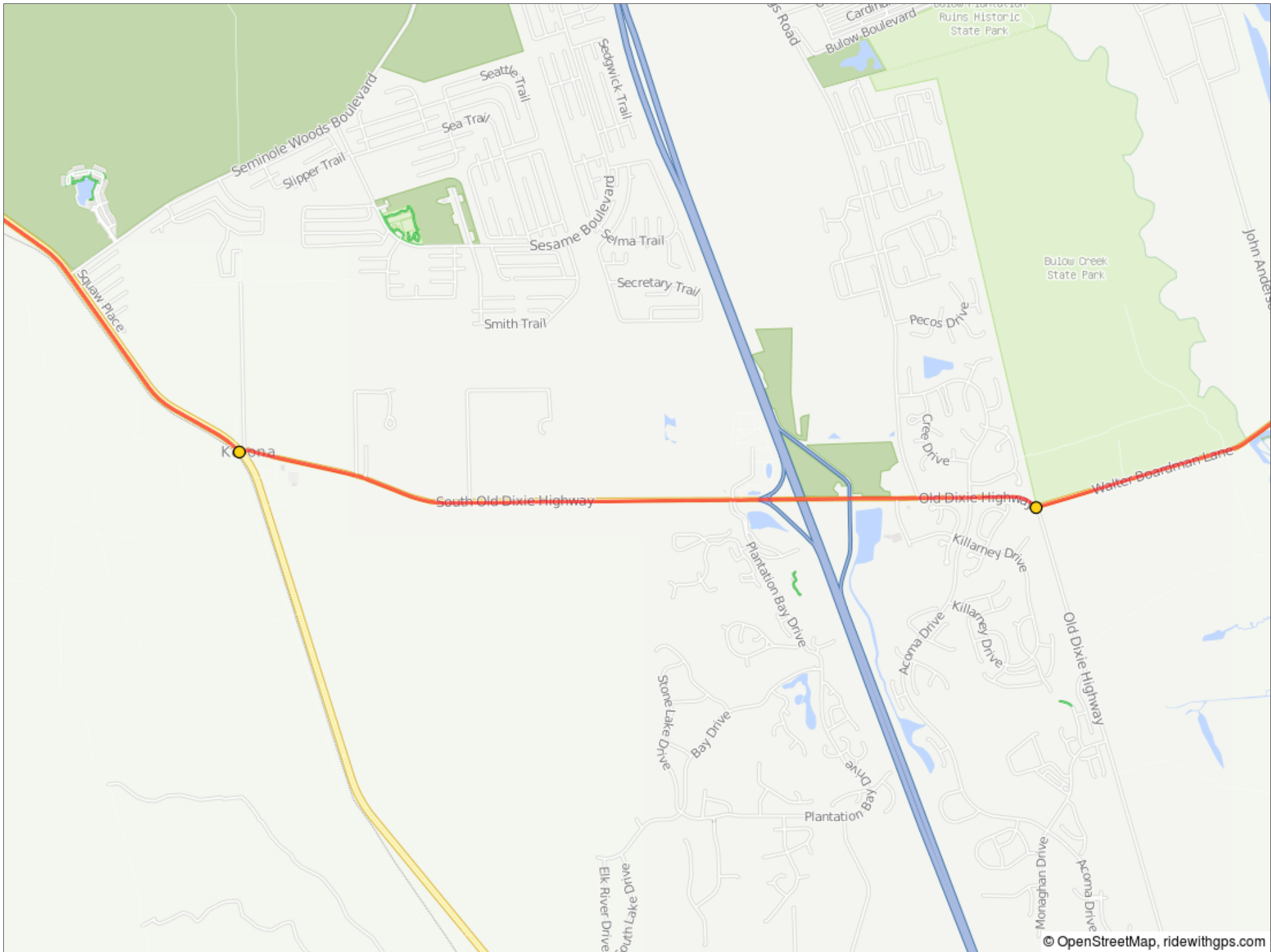
49.2	0.5	↑	0.1	Make a U-turn
49.4	0.1	→	0.0	R toward U.S. 1 S
49.4	0.0	←	1.6	L onto U.S. 1 S

0.7 miles. +0/-0 feet



51.0	1.6	←	3.6	Slight L onto S Old Dixie Hwy
54.6	3.6	←	1.2	L onto Walter Boardman Ln

5.2 miles. +7/-14 feet



55.8	1.2	→	2.0	R onto High Bridge Rd
57.8	2.0	←	0.0	L onto Florida A1A N

3.2 miles. +18/-11 feet



57.8	0.0	←	2.2	Slight L onto Flagler Beach to Marineland Trail
60.0	2.2	🚩	0.0	End of route

2.3 miles. +23/-15 feet

